

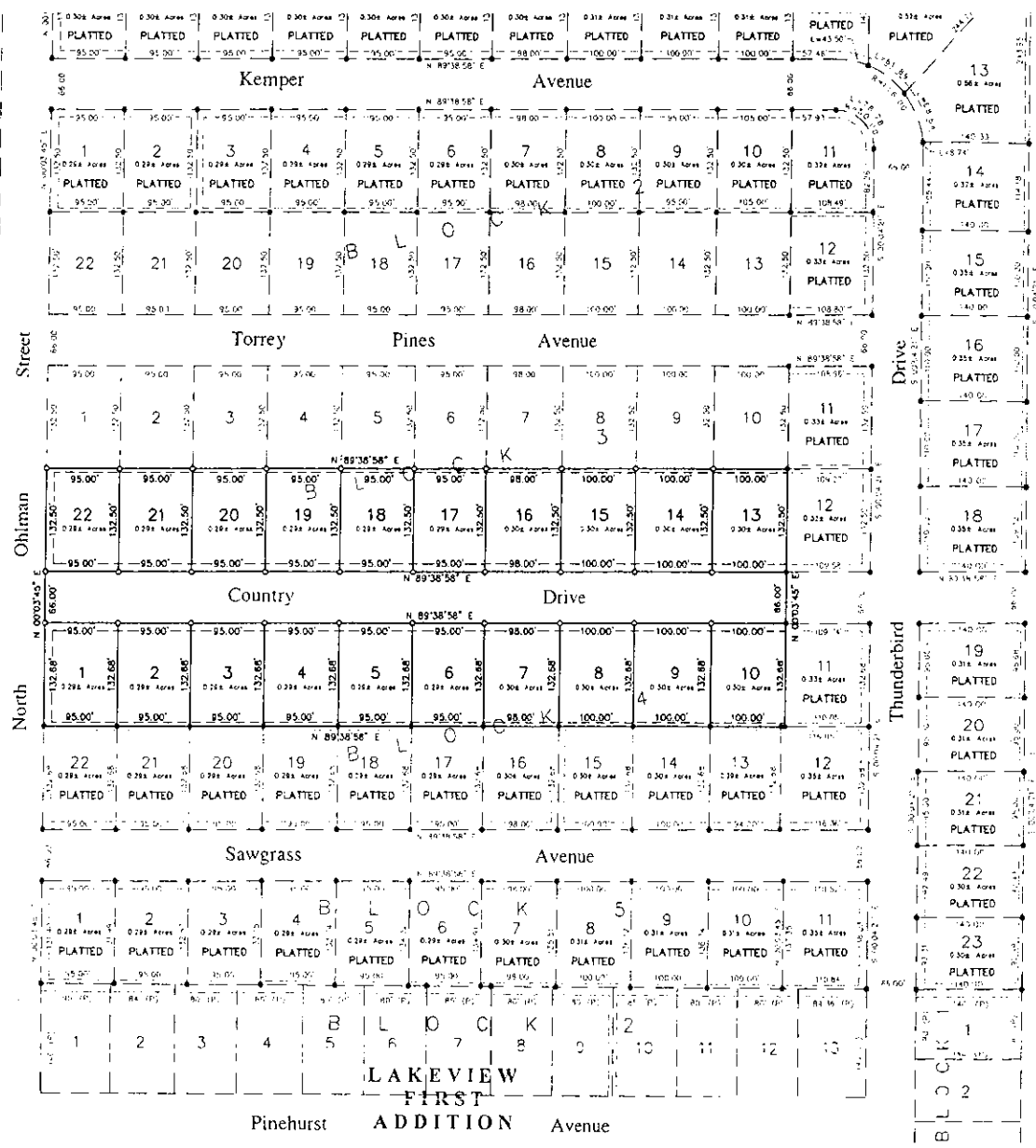
**PLANNING COMMISSION AGENDA**

**MONDAY, JULY 26, 2010**

**ADDENDUM**

**PLAT:**

A PLAT OF LOTS 13-22, BLOCK 3; AND LOTS 1-10, BLOCK 4 OF LAKEVIEW 2<sup>ND</sup> ADDITION AND A PORTION OF COUNTRY DRIVE, ALL BEING A SUBDIVISION OF THE NW ¼ OF THE SW1/4 OF SECTION 9, T 103 N, R 60 W OF THE 5<sup>TH</sup> P.M., CITY OF MITCHELL, DAVISON COUNTY, SOUTH DAKOTA



Easements Within Each Lot.  
 Adjoining Streets 10' Wide Utility Easement  
 Back of Lots 5' Wide Utility and Grange Easement  
 Several Additional Easements as Shown on This Plat

A PLAT OF LOTS 13-22, BLOCK 3; AND LOTS 1-10, BLOCK 4 OF LAKEVIEW 2ND ADDITION AND A PORTION OF COUNTRY DRIVE, ALL BEING A SUBDIVISION OF THE NW 1/4 OF THE SW 1/4 OF SECTION 9, T 103 N, R 60 W OF THE 5th P.M., CITY OF MITCHELL, DAWSON COUNTY, SOUTH DAKOTA.